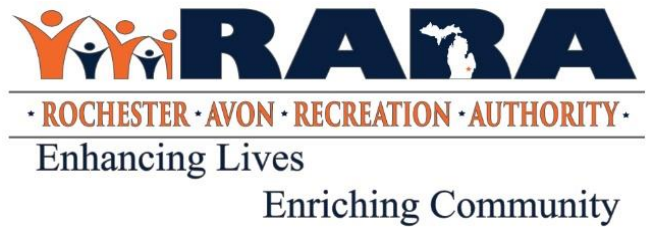


# RARA Day Camps

## 2020 FAQ Sheet



### What are the camp layouts?

We will have 4 camps (Camp 1, Camp 2, Camp 3 and Camp Safari). Each camp will consist of at maximum 10 campers and 2 counselors. All camps will be based out of Bloomer Park, at 4 separate tent locations. Map of camp locations is attached.

### Will campers and staff have to wear masks?

Currently the Department of Licensing and Regulatory Affairs (LARA) is not requiring campers to wear masks, but highly recommend them. Staff and campers must wear masks while indoors, when 6ft. social distancing is not possible for longer than 5 minutes at a time, or when on a bus. When camps are within their 10 person camp group, face masks are not needed (unless one of the above conditions).

### Will camps interact this summer?

Interaction between the 4 camps will be VERY limited and only when necessary. Keeping the 4 camps separate helps to minimize cross-contamination and possible spread. If camp groups must interact, face coverings will be required.

### What are the health & safety adjustments RARA is making this summer in response to COVID-19?

- Longer check-in and sign-out times with designated check in areas before entering the campsite
- Regular temperature and health screens of campers and staff (Pre-screenings and daily screenings)
- Decreasing group sizes & camper/ staff ratios
- Increased frequency of handwashing, especially around meal times and bathroom breaks
- Creative programming aimed at reducing the amount of physical contact and shared items
- No field trips are permitted at this time.
- Special guests/vendors will be visiting the camp groups once a week; social distancing will be enforced
- PPE for staff members
- Increased frequency of cleaning and disinfecting of all items
- Limiting camp visitors
- Safe transition procedures within the camp space

### What will camper drop off and pick up look like?

In front of each camp group tent, there will be a check in/check out table. Parents are asked to social distance 6ft. during the check in/check out process. It is asked that one parent/guardian

checks campers in/out. Parents/guardians are also asked to stay on site until campers are cleared to stay for the day.

## **What if a staff member or camper is feeling ill or has a confirmed case of COVID-19?**

Campers and staff arriving with a 100.4 fever or above will be sent home. If other COVID-19 symptoms are present, campers and staff will also be asked to go home. If RARA learns that an employee or participant has tested positive, RARA will conduct an investigation to determine who may have had close contact with the confirmed-positive employee or participant in the prior 14 days and direct those individuals who have had close contact with the confirmed-positive employee or participant to self-quarantine for 14 days from the last date of close contact with that employee or participant. If campers or staff are sent home, they are asked to self-quarantine for at least 10 days.

*(Specific details for our safety procedure can be found in the COVID-19 Return to Play Packet)*

## **What if it rains? Will camp be cancelled?**

Right now, camp will not be cancelled if it rains. If necessary, bus travel will be modified to allow for social distancing, and we will be taken to the RARA building for the day. At Bloomer Park, we have set aside indoor shelter in case of emergency.

## **Will there be field trips this summer?**

No. Due to LARA and ACA regulations, field trips are not permitted at this time.

## **Will there be swimming this year?**

No, Bloomer Park does not have swimming areas. We will be doing water activities, so campers will be asked to bring bathing suits when needed.

## **What activities can we expect to see with all of these new guidelines?**

There are dozens of non-contact games and sports we can play to keep us plenty busy this summer. Most of the games we have played in the past can be modified for social distancing. We'll be utilizing different 'zones' throughout the park at our disposal, focusing on more individual skills and training, and using markers for kids to know where to stand. These are just a few of the ways we are looking to reduce physical contact.

The careful and creative use of equipment will also help us keep campers active and engaged. Our theme weeks are still in place, and we're hard at work to make sure they are just as much fun as usual!

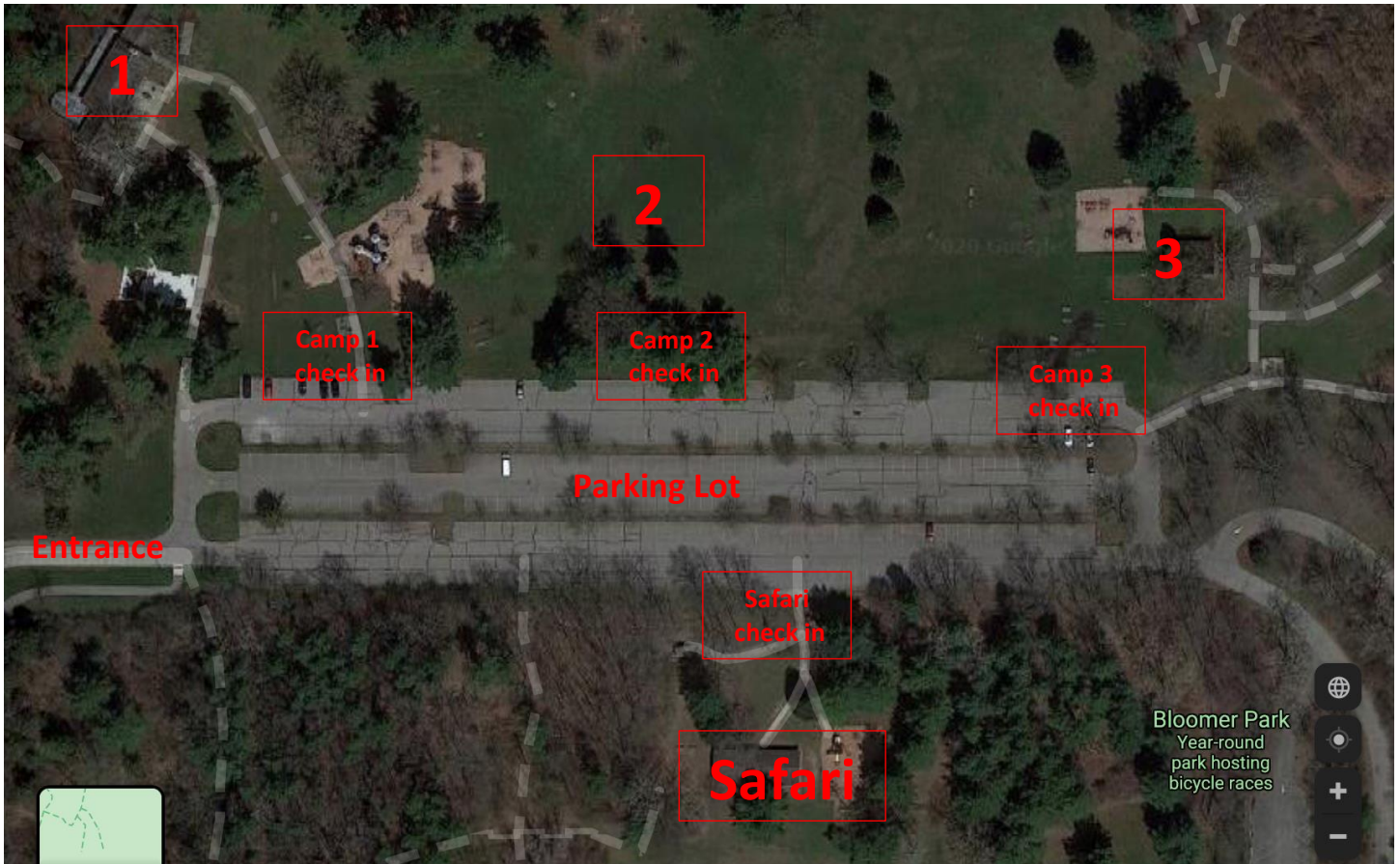
Camp Locations @ Bloomer Park – 345 John R. Rd, Rochester, MI 48307

Camp 1 – Stone Shelter

Camp 2 – Grasslands

Camp 3 – Brick Shelter

Camp Safari – Pine Grove Shelter



*For more details on any of the above information, see the RARA Covid-19 Return to Play Day Camp Packet*